



# VUS 8 PART 1

Post Reconstruction through 1920



## **\*\*Westward Movement**

- 1) In the years following the Civil War **westward movement** increased between Mississippi River and Pacific Ocean
- 2) African Americans called **Exodusters** and Southerners moved west for opportunities
- \*3) Ex Civil War Union Soldiers called **"Buffalo Soldiers"** –helped move Indians to reservations

# Exodusters

16

**All Colored People**  
THAT WANT TO  
**GO TO KANSAS,**  
On September 5th, 1877,  
Can do so for \$5.00

## IMMIGRATION.

WHEREAS, We, the colored people of Lexington, Ky. knowing that there is an abundance of choice lands now belonging to the Government, have assembled ourselves together for the purpose of locating on said lands. Therefore,

BE IT RESOLVED, That we do now organize ourselves into a Colony, as follows:— Any person wishing to become a member of this Colony can do so by paying the sum of one dollar (\$1.00), and this money is to be paid by the first of September, 1877, in instalments of twenty-five cents at a time, or otherwise as may be desired.

RESOLVED, That this Colony has agreed to consolidate itself with the Nicodemus Town, Solomon Valley, Graham County, Kansas, and can only do so by entering the vacant lands now in their midst, which costs \$5.00.

RESOLVED, That this Colony shall consist of seven officers—President, Vice-President, Secretary, Treasurer, and three Trustees. President—M. M. Bell; Vice-President—Isaac Talbott; Secretary—W. J. Niles; Treasurer—Daniel Clarke; Trustees—Jerry Lee, William Jones, and Abner Webster.

RESOLVED, That this Colony shall have from one to two hundred militia, more or less, as the case may require, to keep peace and order, and any member failing to pay his dues, as aforesaid, or failing to comply with the above rules in any particular, will not be recognized or protected by the Colony.





## **\*\*Westward Movement**

4)Aided by technology- railroad, mechanical reaper (Cyrus McCormick), John Deere- Steel plow

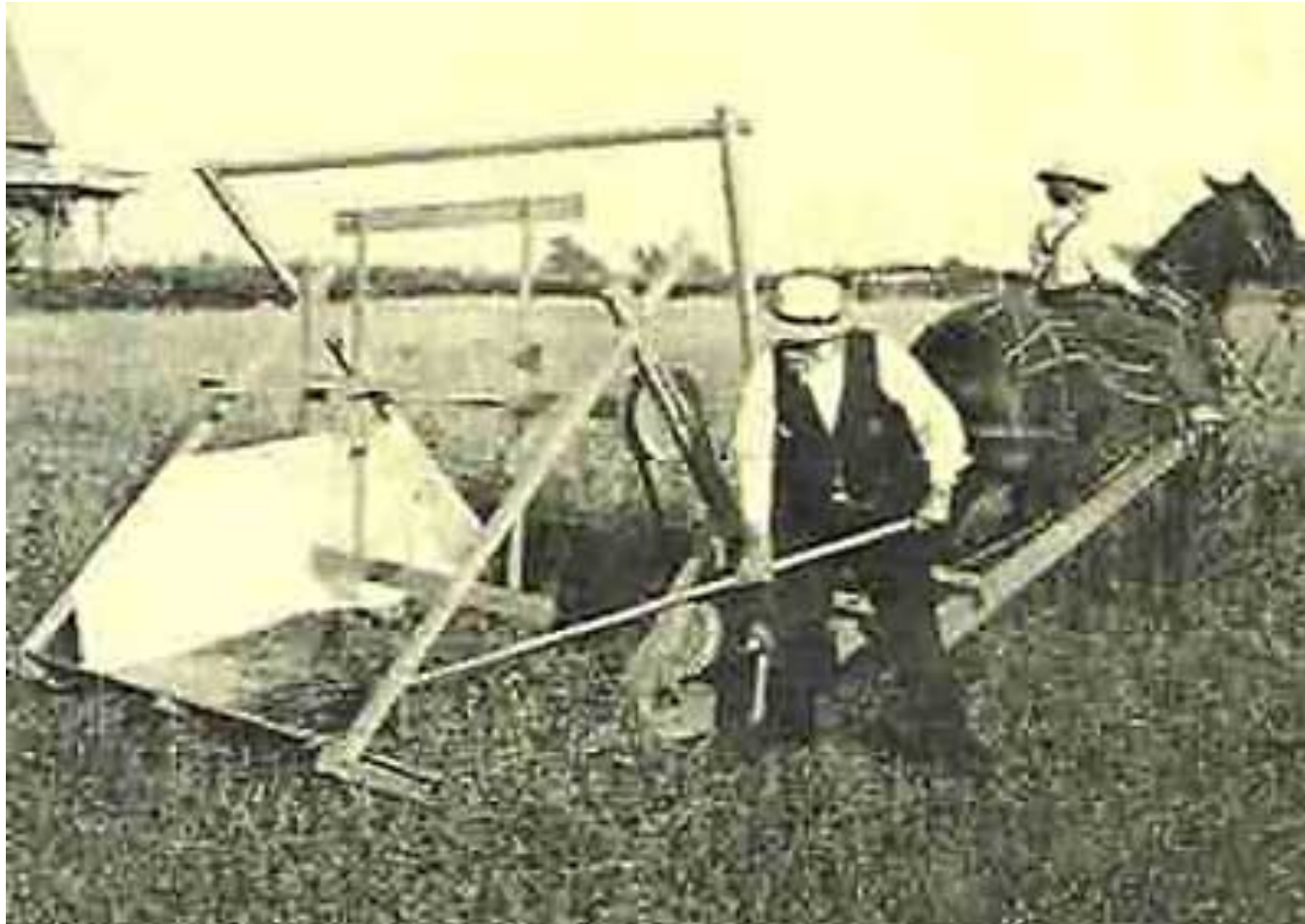
**5)Homestead Act-** gave free public land in the west to anyone willing to live on and cultivate the land for 5 years.

6)By 1900-Great Plains and Rocky Mts. no longer an unsettled frontier.



**CATTLE TRAILS**

# Cyrus McCormick's REAPER- Harvested grain



## \*\*Era of the Cowboy in the West

- 1) Demand for beef
- 2) Long Drive-cowboys would “drive” cattle across the west
- 3) Brought to an end by expansion of railroads and barbed wire

PRODUCTS WILL PAY FOR LAND AND IMPROVEMENTS!

# MILLIONS OF ACRES

View on the Big Blue, between Camden and Crest, representing Valley and Rolling Prairie Land in Nebraska.



## IOWA AND NEBRASKA

# LANDS

FOR SALE ON **10** YEARS CREDIT

BY THE  
**Burlington & Missouri River R.R. Co.**

**AT 6 PER CT. INTEREST AND LOW PRICES.**

Only One-Seventh of Principal Due Annually, beginning Four Years after purchase.

20 PER CENT. DEDUCTED FROM 10 YEARS PRICE, FOR CASH.

### LAND EXPLORING TICKETS SOLD

and Cost allowed in First Interest paid, on Land bought in 30 days from date of ticket.

Thus our Land Buyers **GET A FREE PASS** in the State where the Land bought is located.

These **TERMS** are **BETTER** at \$5, than to pre-empt United States Land at \$2.50 per Acre.

EXTRAORDINARY INDUCEMENTS on FREIGHT and PASSAGE are AFFORDED TO PURCHASERS and THEIR FAMILIES.

Address **GEO. S. HARRIS, LAND COMMISSIONER,**  
or **T. H. LEAVITT, Ass't Land Comm'r, Burlington, Iowa.**

Or apply to

**FREE ROOMS** for buyers to board themselves are provided at Burlington and Lincoln.

CIRCULARS are supplied GRATIS for distribution in ORGANIZING COLONIES and to induce individuals to emigrate WEST.

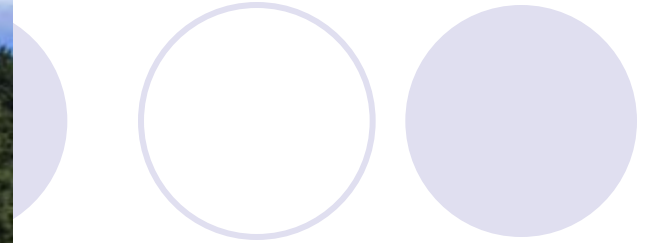
A SECTIONAL MAP, showing exact location of our IOWA LANDS is sold for 30 Cents, and of NEBRASKA LANDS for 50 Cents.



# Soddies









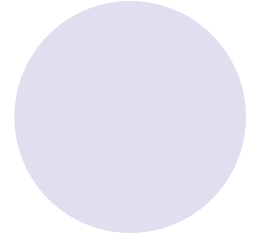
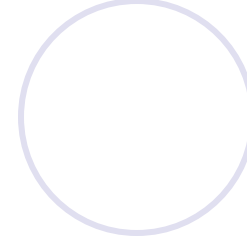
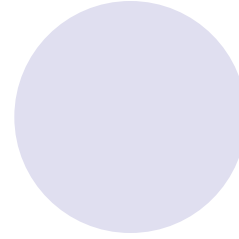
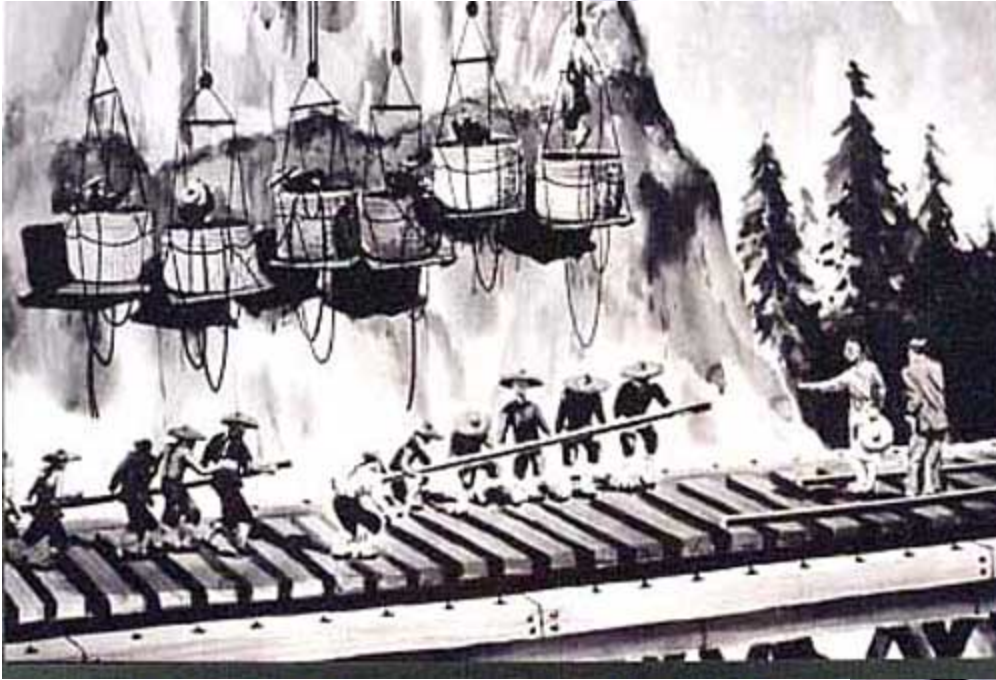
Winter Scene on a Kinkaid Homestead in Nebraska.

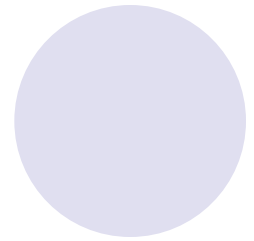
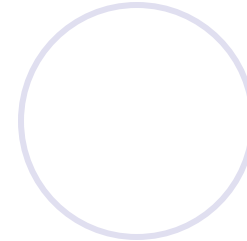
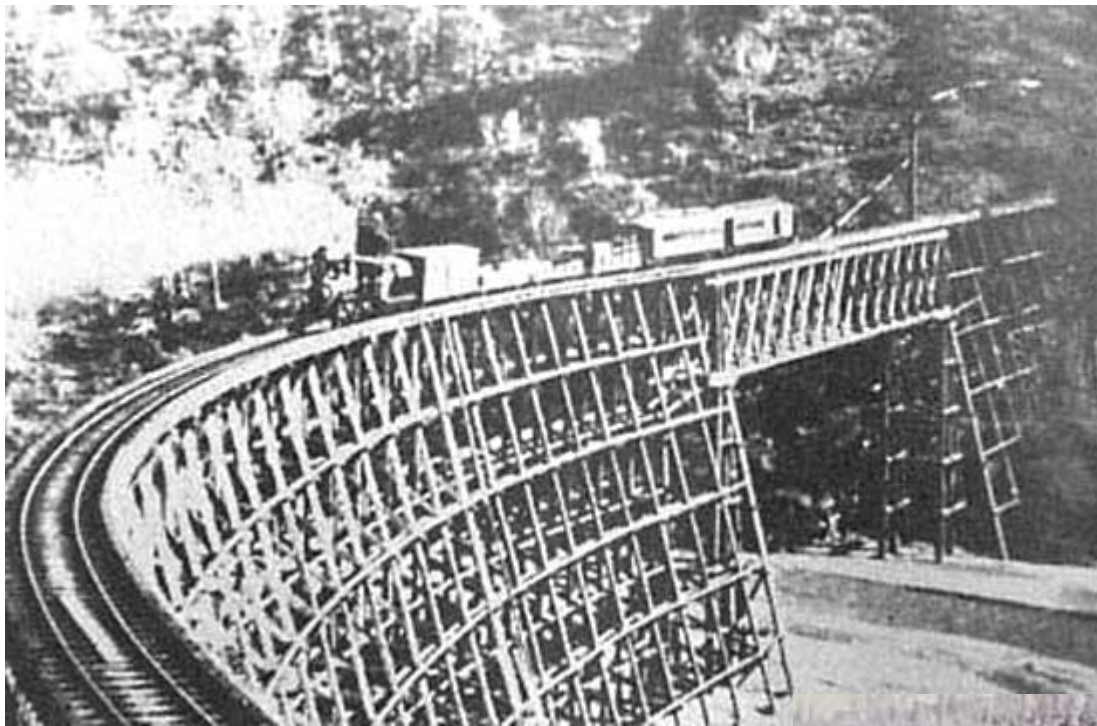


Photo: National Parks Service



Completion of the world's first transcontinental railroad was celebrated here where the Central Pacific and Union Pacific Railroads met on May 10, 1869.





## **\*\*Native Americans**

- Forcible removal of Indians continued throughout the 19<sup>th</sup> century.
- Conflicts with Plains Indians-
- **\*\*1876-Little Big Horn, Montana-George Custer, Sitting Bull, and Crazy Horse**

## **\*\*Native Americans**

- **1890-Wounded Knee, South Dakota-**  
**ends Native American resistance on the**  
**Great Plains.**
- GHOST DANCE thought to be a war dance
- \*\*\*Almost 300 old men, women, and children killed by the U.S. military

# Sitting Bull



# CRAZY HORSE



# CRAZY HORSE MEMORIAL



# CRAZY HORSE MEMORIAL



# GHOST DANCE



# Little Big Horn



# Wounded Knee







BEFORE OUR WHITE BROTHERS  
CAME TO CIVILIZE US WE HAD  
NO JAILS. THEREFORE WE HAD  
NO CRIMINALS. YOU CAN'T HAVE  
CRIMINALS WITHOUT A JAIL.  
WE HAD NO LOCKS OR KEYS.  
AND SO WE HAD NO THIEVES.  
IF A PERSON WAS SO POOR  
THAT HE HAD NO HORSE, TIPI  
OR BLANKET, SOMEONE GAVE HIM THESE THINGS.  
WE WERE TOO UNCIVILIZED TO SET MUCH VALUE  
ON PERSONAL BELONGINGS. WE WANTED TO HAVE  
THINGS ONLY IN ORDER TO GIVE AWAY. WE HAD NO  
MONEY, AND THEREFORE A MAN'S WORTH COULDN'T BE  
MEASURED BY IT. WE HAD NO WRITTEN LAW, NO ATTORNEYS  
OR POLITICIANS, THEREFORE WE COULDN'T CHEAT.  
BUT NOW "VISIBLE PROGRESS IS EVERYWHERE"—JAILS ALL  
OVER THE PLACE, AND WE KNOW THESE JAILS ARE FOR  
US INDIANS. WHAT A PITY THAT SO MANY OF US DON'T  
APPRECIATE THEM!

LAME DEER - SEEKER of VISIONS

# INDIAN LAND FOR SALE

GET A HOME

OF  
YOUR OWN

EASY PAYMENTS



PERFECT TITLE

POSSESSION  
WITHIN  
THIRTY DAYS

## FINE LANDS IN THE WEST

IRRIGATED  
IRRIGABLE

GRAZING

AGRICULTURAL  
DRY FARMING

IN 1910 THE DEPARTMENT OF THE INTERIOR SOLD UNDER SEALED BIDS ALLOTTED INDIAN LAND AS FOLLOWS:

Location	Acres	Average Price per Acre	Location	Acres	Average Price per Acre
Colorado	5,211.21	\$7.27	Oklahoma	54,664.00	\$19.14
Idaho	17,013.00	24.85	Oregon	1,020.00	15.43
Kansas	1,684.50	33.45	South Dakota	120,445.00	16.53
Montana	11,034.00	9.86	Washington	4,879.00	41.37
Nebraska	5,641.00	36.65	Wisconsin	1,069.00	17.00
North Dakota	22,610.70	9.93	Wyoming	865.00	20.64

FOR THE YEAR 1911 IT IS ESTIMATED THAT 350,000 ACRES WILL BE OFFERED FOR SALE

For information as to the character of the land write for booklet, "INDIAN LANDS FOR SALE," to the Superintendent U. S. Indian School at any one of the following places:

CALIFORNIA:  
Bakers-  
Fresno-  
Hayward-  
Los Angeles-  
San Francisco-  
Stockton-  
Yuba

MISSISSIPPI:  
Birmingham-  
Mobile-  
New Orleans-  
Pensacola-  
Tallahassee-  
Tombigbee

NORTH DAKOTA:  
Bismarck-  
Grand Forks-  
Minot-  
Mandan-  
Wahpeton-  
Weymouth

OKLAHOMA:  
Ada-  
Bartlesville-  
Catoosa-  
Claremore-  
Cushing-  
Lawton-  
Muskogee-  
Pawnee-  
Tulsa

SOUTH DAKOTA:  
Chickasaw Agency-  
Crow Creek-  
Grand River-  
Harrison-  
Juntura-  
Laramie-  
Newell-  
Sioux Falls-  
Wichita

WASHINGTON:  
Fort Simcoe-  
Fort Spokane-  
Tulsa-  
Tulsa-  
Tulsa-  
Tulsa-  
Tulsa-  
Tulsa-  
Tulsa

WALTER L. FISHER,  
Secretary of the Interior

ROBERT G. VALENTINE,  
Commissioner of Indian Affairs

## **\*\*NEW STATES**

- **BY EARLY 20<sup>TH</sup> CENTURY ALL STATES  
IN THE CONTINENTAL UNITED STATES  
HAD BEEN ADMITTED.**
- **\*Arizona-last 1912.**

# **\*\*IMMIGRATION**

## **○ WHERE THEY CAME FROM**

- Before 1871- from Northern and Western Europe (Germany, England, Ireland, Norway, Sweden)**
- After 1870-1921- Southern and Eastern Europe (Italy, Greece, Poland, Russia, Hungary, Yugoslavia) as well as Asia (China and Japan)**

# MIGRANT'S JOURNEY



# ASIA MAP



# **\*\*IMMIGRATION**

## **○ PROCESSING CENTERS**

### **○ European immigrants**

- **Ellis Island-NEW YORK CITY-  
Statue of Liberty(before Castle  
Garden)**

### **○ Asian immigrants**

#### **○ China and Japan**

- **Angel Island-SAN  
FRANCISCO, CA**

# CASTLE GARDEN



# ELLIS ISLAND MUSEUM



# DETENTION SITES



The Chinese Detention Building at Angel Island.

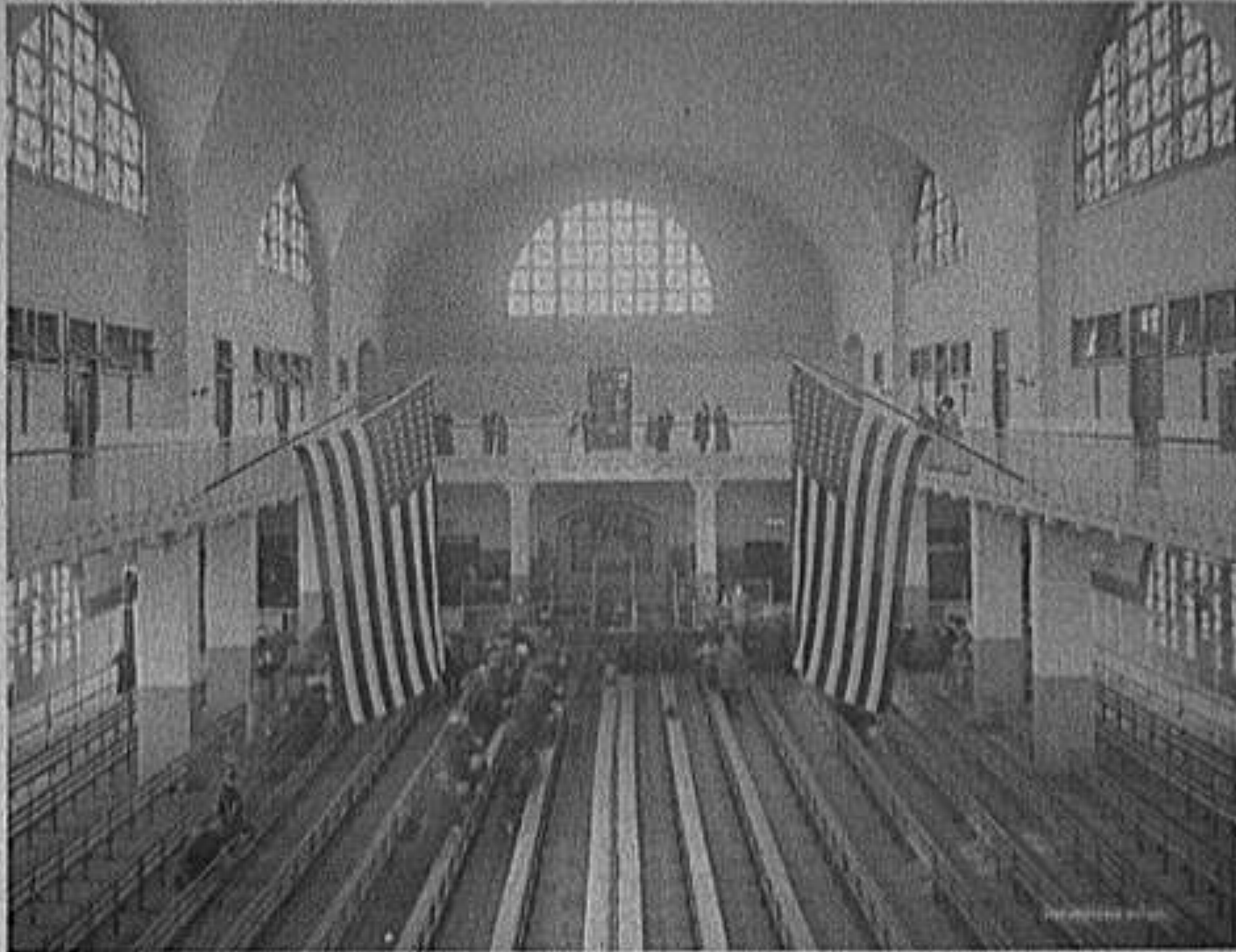
## Quote on ***Statue of Liberty***

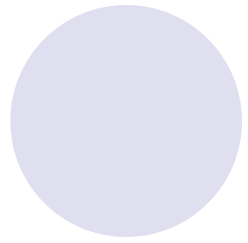
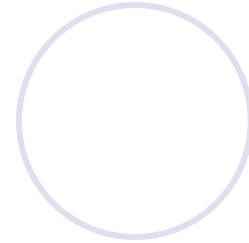
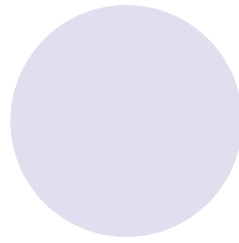
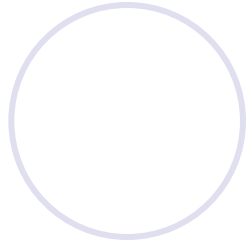
- “Give me your tired, your poor, Your huddled masses yearning to breathe free, The wretched refuse of your teeming shore. Send these, the homeless, tempest tossed to me, I lift my lamp beside the golden door” - from “The New Colossus” by Emma Lazarus



AT EL

ST0001 INSPECTION ROOM, ELLIS ISLAND, NEW YORK







# **\*\*IMMIGRATION-before and after 1871**

- **WHY THEY CAME**

RELIGIOUS AND POLITICAL FREEDOM

ECONOMIC OPPORTUNITY

BETTER LIVES FOR FAMILIES

# IMMIGRATION

- **WHERE THEY WORKED-after 1871:**

- **Help build the Transcontinental RR (Chinese)**
- **Textile and steel mill workers in the Northeast**
- **Coal miners (Slavs, Poles, and Italians)**

# \*\*IMMIGRANTS

## WORK CONDITIONS

- Low wages and long hours
- Dangerous working conditions

## DISCRIMINATION-faced hardship and hostility

- Differing cultures and religions clashed with earlier immigrants-**NATIVISM**
- Competition for jobs

## **\*\*IMMIGRATION-Characteristics**

- 1) Settled in ethnic neighborhoods but worked hard to learn English and become US citizens
- 2) **Public schools-assimilation (fitting in)**
- 3) Lived in tenements and slums
- 4) Their contributions helped build America's strength-created a  
**MELTING POT OF CULTURES**





# Assimilation



METHOD OF TEACHING ENGLISH BY USE OF SAND TABLE, NO. 27 DAY SCHOOL, PINE RIDGE.



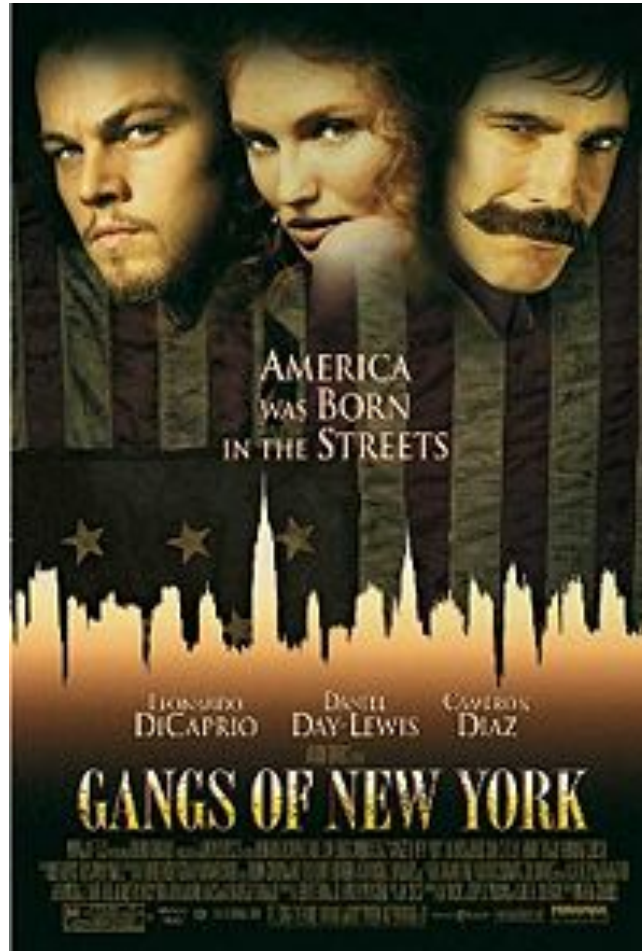
**\*\*QUOTA LAWS-all immigrants**  
**QUOTA LAWS-limiting**  
**immigration because of**  
**resentment**

- **Chinese Exclusion Act of 1882**
- **\*Immigration Restriction Act of 1921**
- **Gentlemen's Agreement-1907-**  
**limited Japanese immigration**
- **\*\*These laws cut off immigration to**  
**the U.S. for several decades**

# LITTLE ITALY



# GANGS OF NEW YORK



# GANGS OF NEW YORK



# Angel Island



# INDUSTRIAL REVOLUTION

late 1800' s

- **WHAT**-INDUSTRIAL REVOLUTION
- **WHEN**-LATE 19<sup>TH</sup> C-EARLY 20<sup>TH</sup> C
- **WHY**-INVENTIONS, INDUSTRY, AND INNOVATIONS, CHEAP LABOR
- **WHO**-INDUSTRIALISTS AND INVENTORS
- **WHERE**-CITIES AND FARMS

# **\*\*Reasons for Economic Transformation-** **INDUSTRIAL REVOLUTION-NMGC**

**1)Natural resources and navigable rivers**

**2)Migration from farms to cities**

**3)Government support for business**

**Laissez-faire**- Idea that encouraged the government not to get involved in business affairs

**Special Considerations**-land grants to railroad builders

**4)Cheap labor from immigrants**

## \*\*US Economy after The Civil War

- **Industrial** economy-because of reasons listed before
- Expansion of **Big Business**-with government approval-**laissez faire**
- Growth of **large scale agriculture** with farming inventions-ex. **the reaper, steel plow**

# INDUSTRIAL REVOLUTION-SOUTH

- THE **SOUTH** TRAILED BEHIND THE REST OF THE U.S
- REASONS-HIGH TARIFFS, RAILROAD COSTS, NO MONEY FOR INVESTMENTS, RUINED FARMLAND
- **ECONOMIES** THAT WILL DEVELOP-  
MINING, TEXTILE AND FURNITURE  
MANUFACTURING, AND TOBACCO  
AND COTTON PRODUCTION

# **\*\*Inventions and Innovations**

- **Bessemer Process**

- **Better, Cheaper Steel**

- Cyrus McCormick**

- Reaper**

- **Thomas Alva Edison- “Wizard of Menlo Park”**

- Electric light bulb**

- **World’ s first electric power plant**

- **Alexander Graham Bell-RING, RING**

- **Telephone**

- **Wilbur and Orville Wright-FLIGHT**

- **First piloted flight of an airplane (in Kitty Hawk)**

- **Henry Ford-**

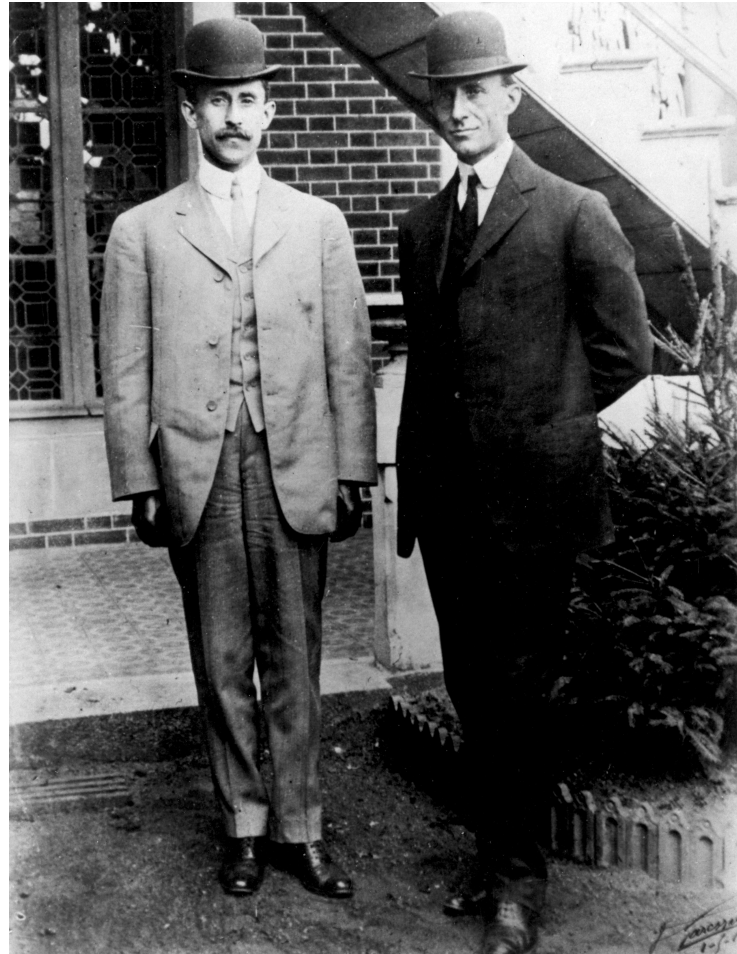
- assembly line process and cars**



## **\*\*Innovations**

- **Corporations**(limited liability)-an organization that could combine large financial resources with minimum risk- became the model for all large industries

# WRIGHT BROTHERS



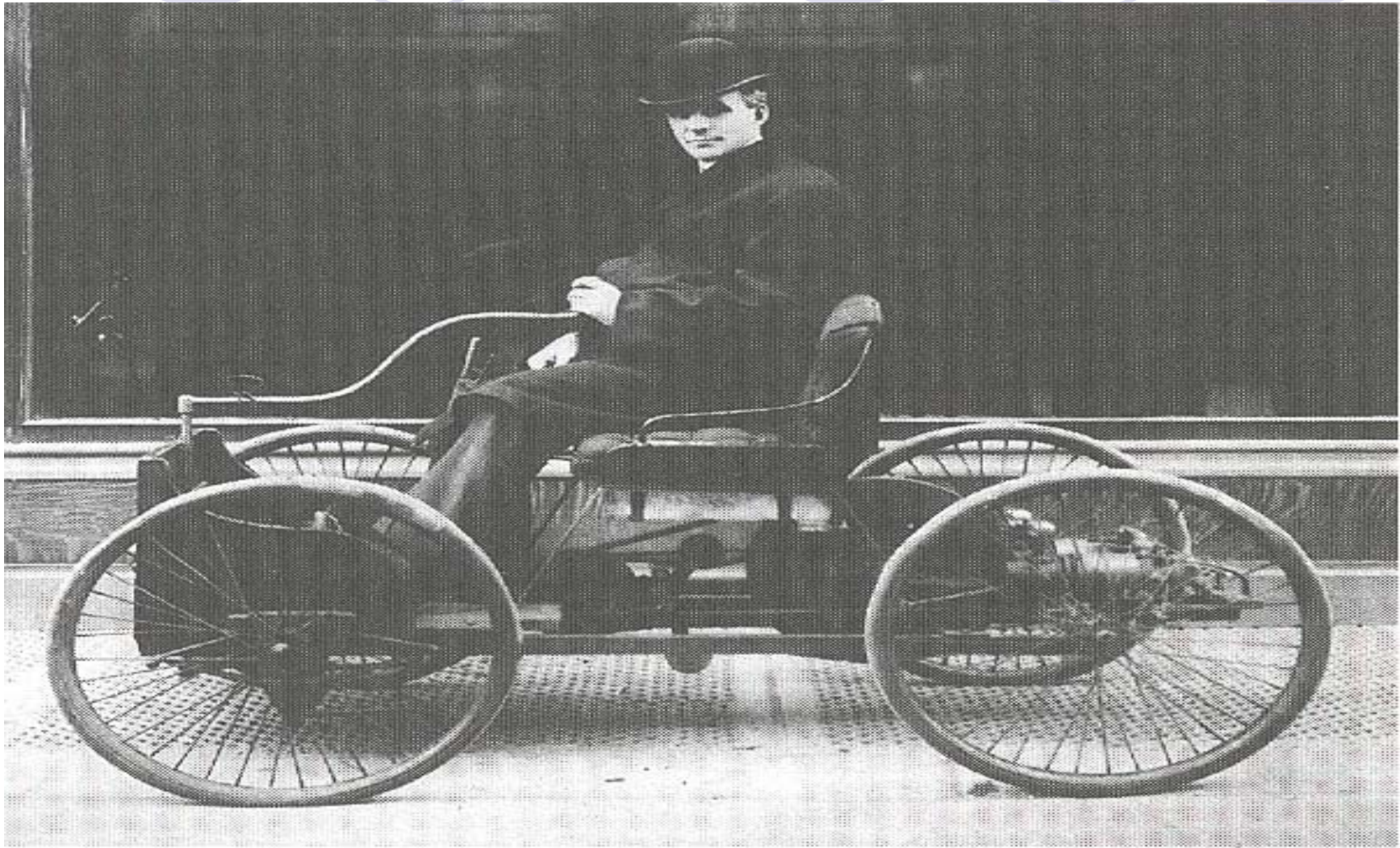
# WRIGHT BROS.MEMORIAL



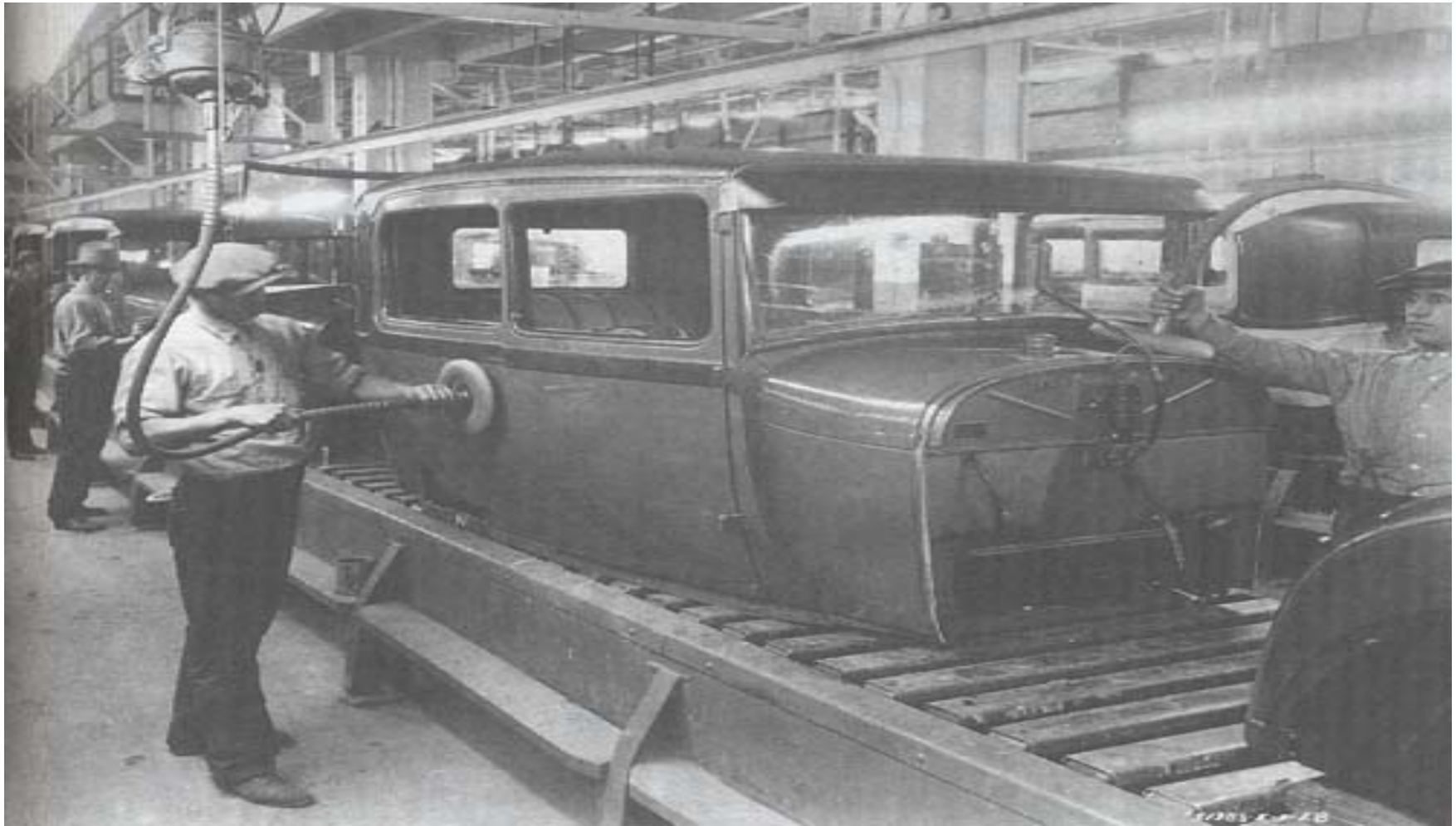
# HENRY FORD AND MODEL T



# Henry Ford and the first car



1930's assembly line-any color as long as it is *BLACK*.



# ASSEMBLY LINE



# 1903- 1<sup>st</sup> Ford factory



# 1917- Ford plant in Detroit



# **\*\*Industrial Leaders (Industrialists)- “ROBBER BARONS”**

- **Andrew Carnegie**
  - **Steel**
- **J.P. Morgan**
  - **Banking and Finance**
- **John D. Rockefeller**
  - **Oil**
- **Cornelius Vanderbilt**
  - **Railroads**



# SOCIAL DARWINISM

- The belief that the rich are superior over poor people and therefore they feel they deserve their lavish wealth.
- Survival of the **Economic “FITTEST”**



# **SOCIALISM**

- **When government controls business and industry.**

## \*Growth of cities-Characteristics

- 1) Pittsburgh-steel, Chicago-beef, Detroit-car, and Cleveland-oil -grew around certain industries
- 2) Shortage of housing and need for public works such as sewer, trash service, and public transportation
- 3) NYC subway- world' s first subway
- 4) Streetcars and trolleys
- 5) Skyscrapers symbolize cities



# NEW YORK CITY



# View of Robber Barons

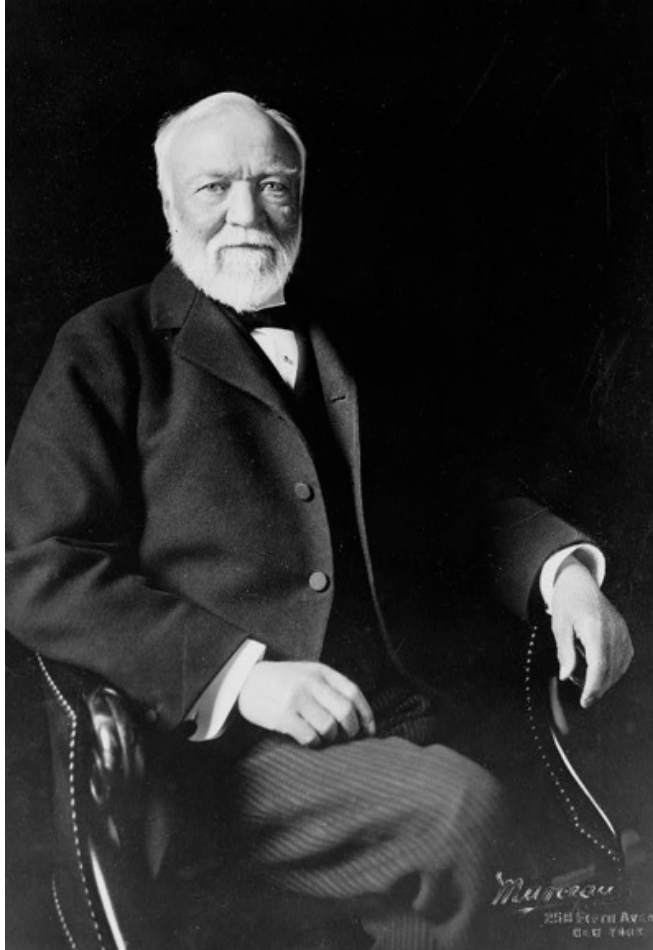


# Andrew Carnegie



- Immigrant from Scotland
- 1875- opens first steel mill
- 1901- sells company to J.P. Morgan for roughly \$500 million (about \$10.5 billion today)

# CARNEGIE



# Pittsburgh- 1903-Steel Industry



# Carnegie's Castle



# Carnegie Hall-New York



# Steel plant early 20<sup>th</sup> century

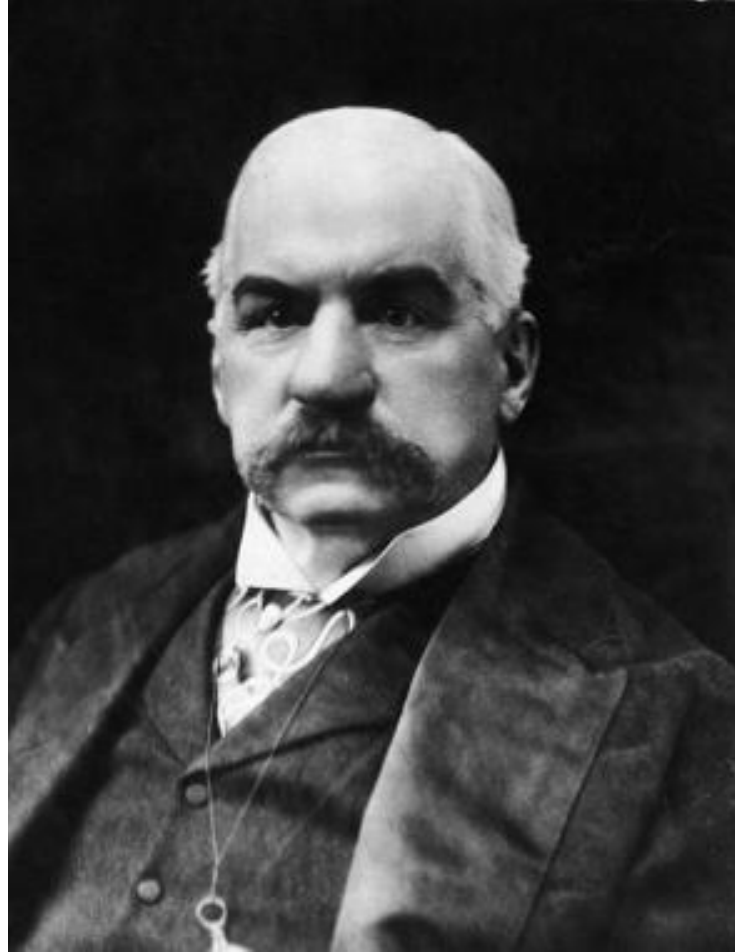




# JP Morgan

- Controlled investment banking in the United States
- \*\*\*World's first billion dollar corporation

MORGAN

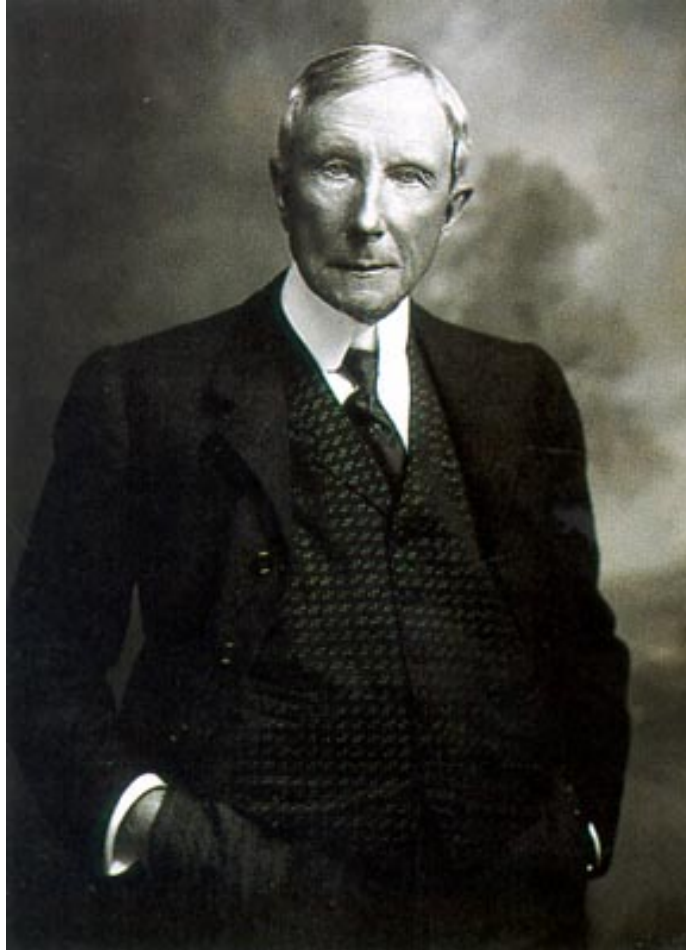


# John D. Rockefeller



- 1870- established Standard Oil company
- By 1900 90% of the refined oil produced in the US comes from Standard Oil

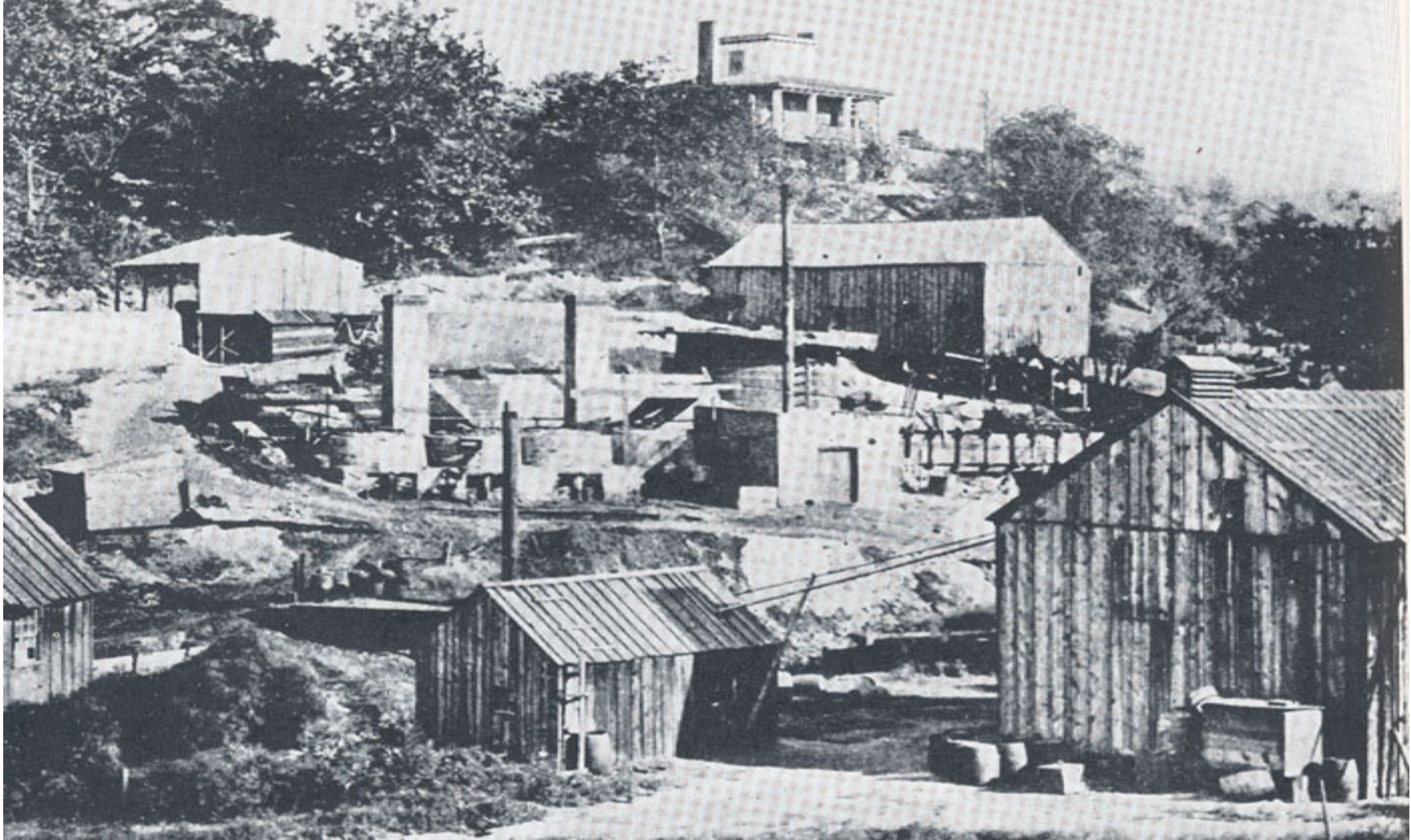
# ROCKEFELLER



# Rockefeller Center in New York



# Standard Oil refinery circa 1870

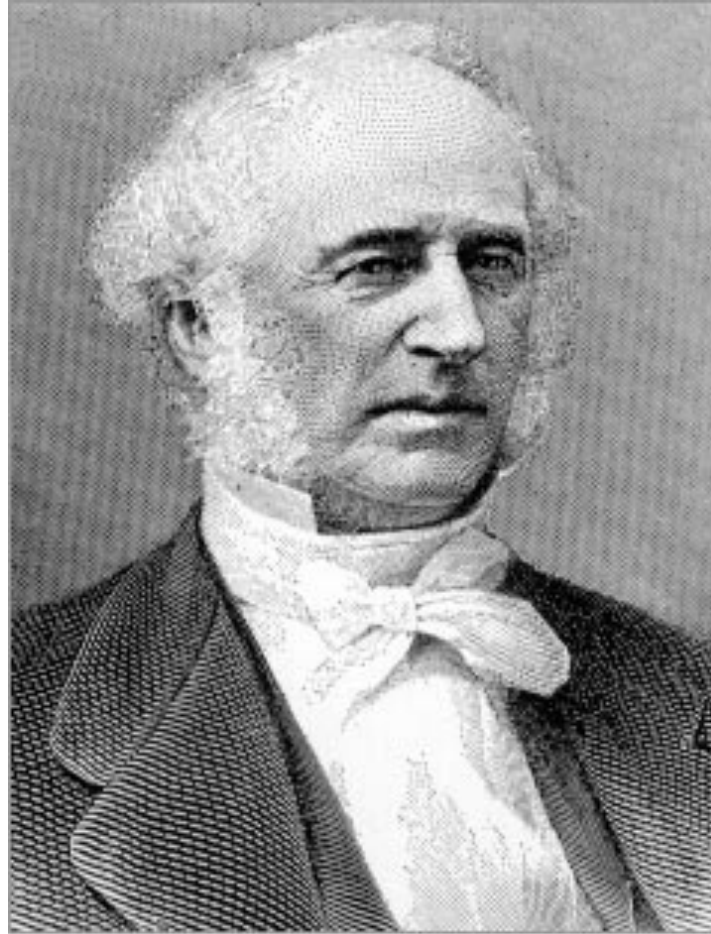


# Cornelius Vanderbilt



- Controlled majority of the rail lines in the north by the 1870' s.
- At the time of his death in 1877 was the richest man in the world (@ \$100 million).

# VANDERBILT



FROM: VANDERBILT UNIVERSITY



## **\*\*GILDED AGE**

- POST CIVIL WAR-MAINLY IN THE NORTH
- AGE OF INDUSTRIAL EXPANSION AND FORTUNES CREATED-POPULARIZED BY THE ROBBER BARONS
- SIGNS OF LAVISH WEALTH EX. CARNEGIE' S CASTLE